

**Strawbees.®**

# City Building and the SDGs



Week 1- Building a city intro  
Week 2- Problem solving and Prototyping  
Week 3- Open Build day.  
Week 4- Share and Reflect

**DEFINE THE PROBLEM**

**DO YOUR RESEARCH**

**DEVELOP A POSSIBLE SOLUTION**

**DESIGN YOUR SOLUTION**

**BUILD A PROTOTYPE**

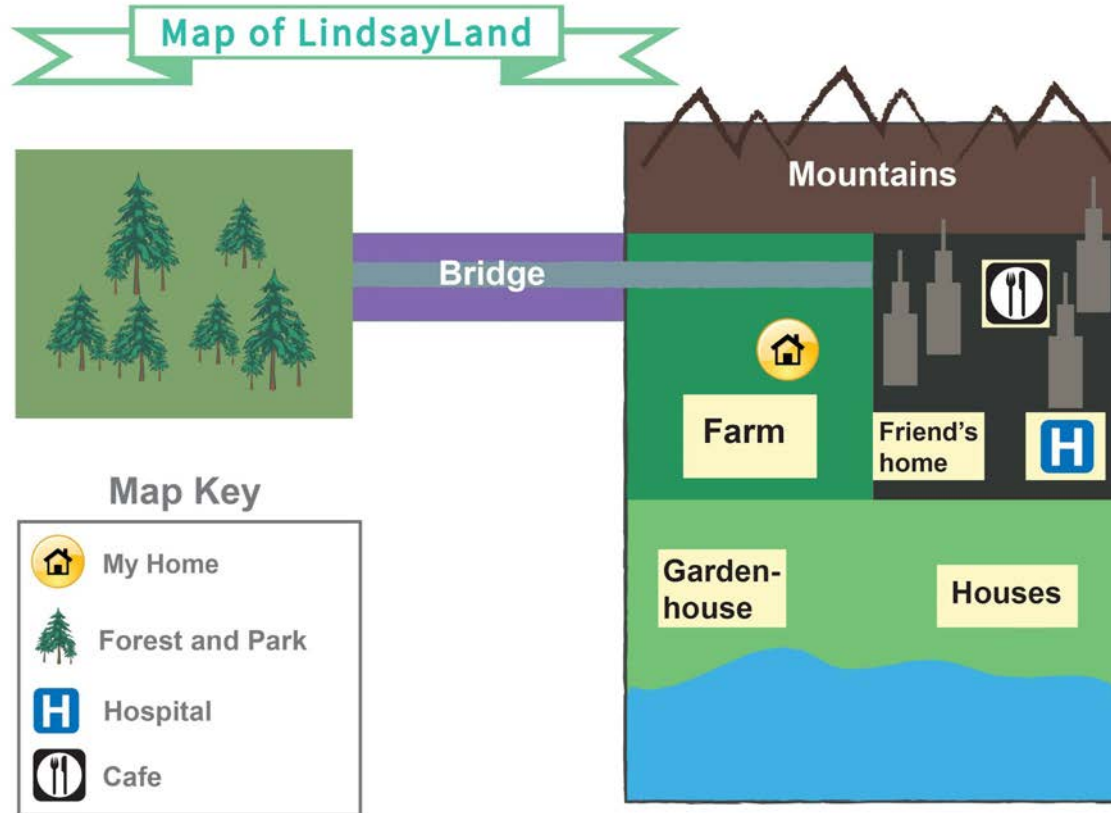
**TEST IT**

**EVALUATE YOUR SOLUTIONS**

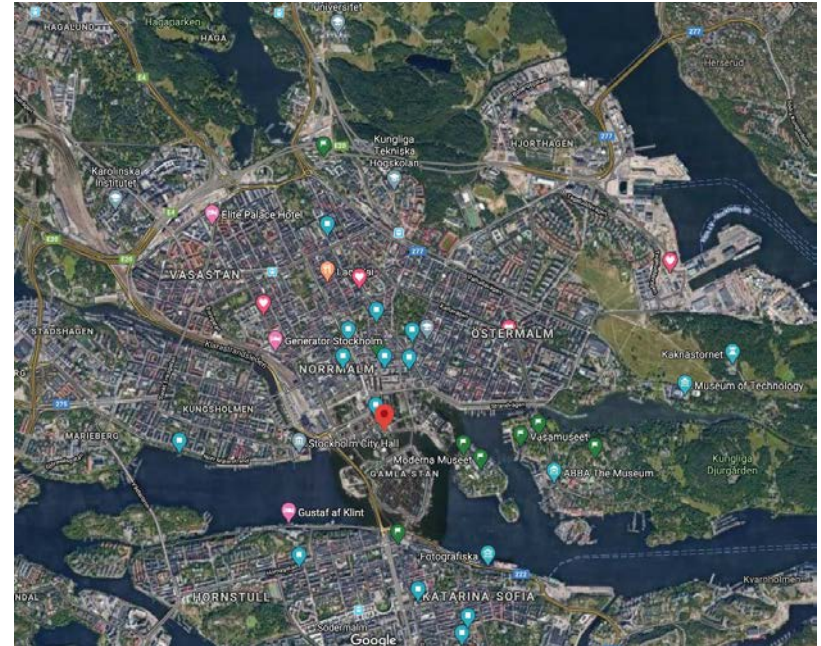
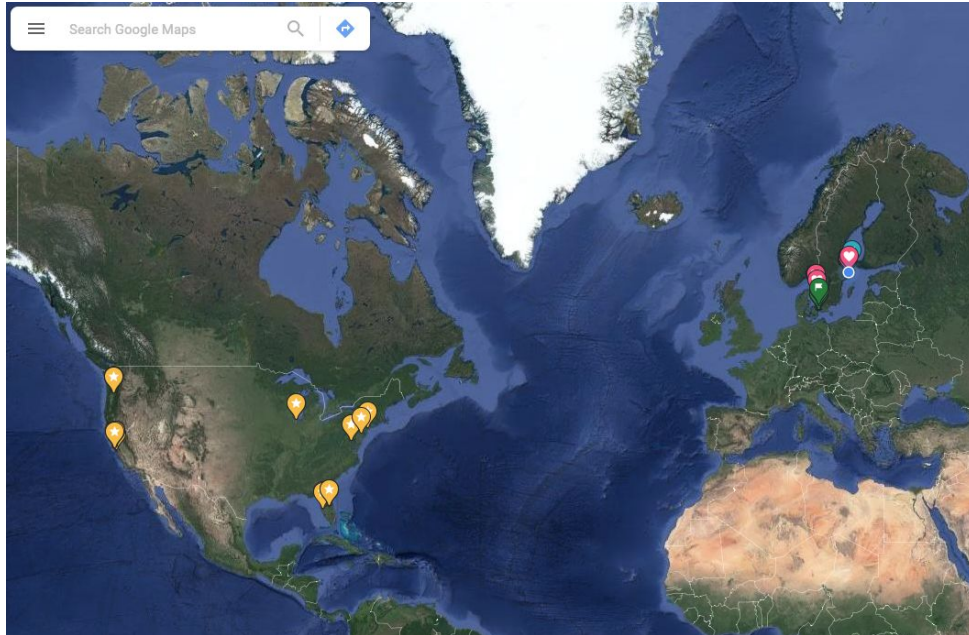


- GROCERY STORES
- SCHOOLS
- AIRPORTS
- TRAIN STATIONS
- DOCTOR'S OFFICES
- POST OFFICES
- PARKS

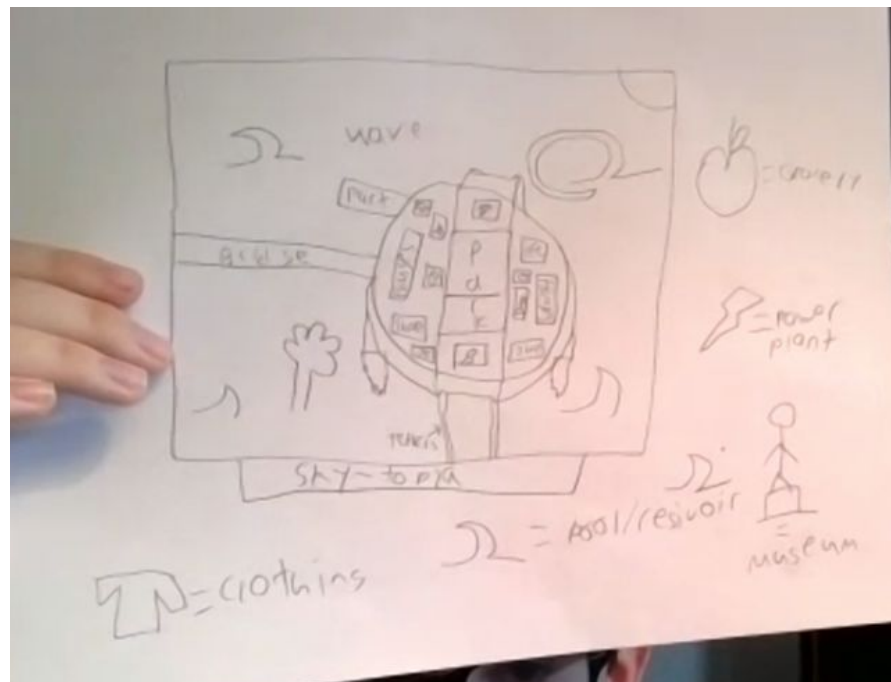
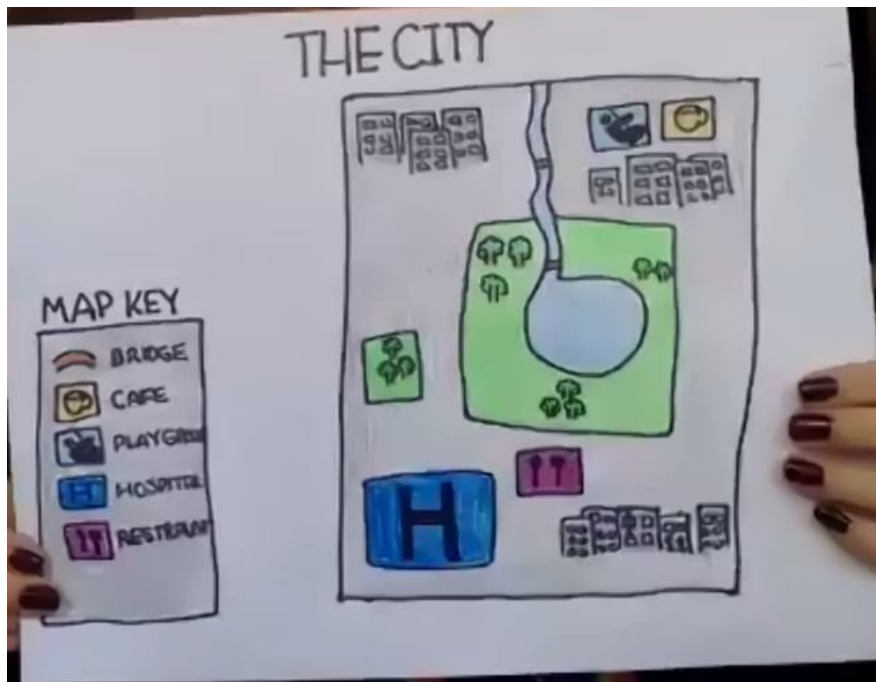
# Project: Draw a Map of Your Local Community



# Google Maps - <https://www.google.com/maps>











# Transform into Buildings



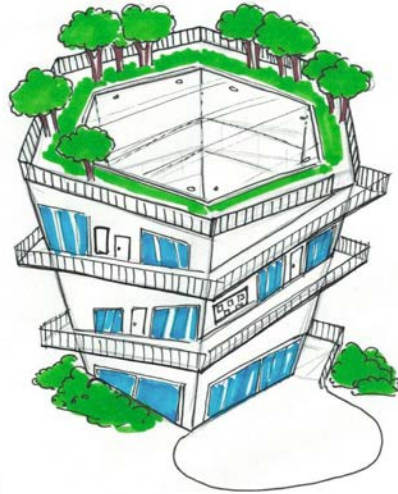
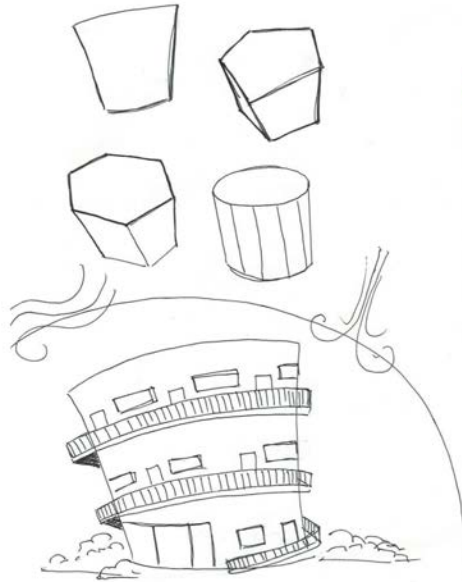




# **Part 3: Building from Micro to Macro**

# Task 1

Build from micro



Community  
Park School





## Task 2: to macro!



# SUSTAINABLE DEVELOPMENT GOALS

## Task 2

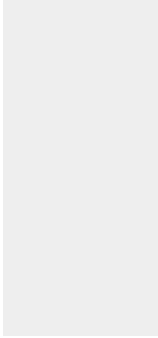
Pick 1 Sustainable Development Goal to Achieve in your City



For ideas you can look at:

<https://learning.strawbees.com/sdgs/>





2 ZERO HUNGER



15 LIFE ON LAND

