

# ME AND MY SURROUNDINGS

# 1. My Face and Smile

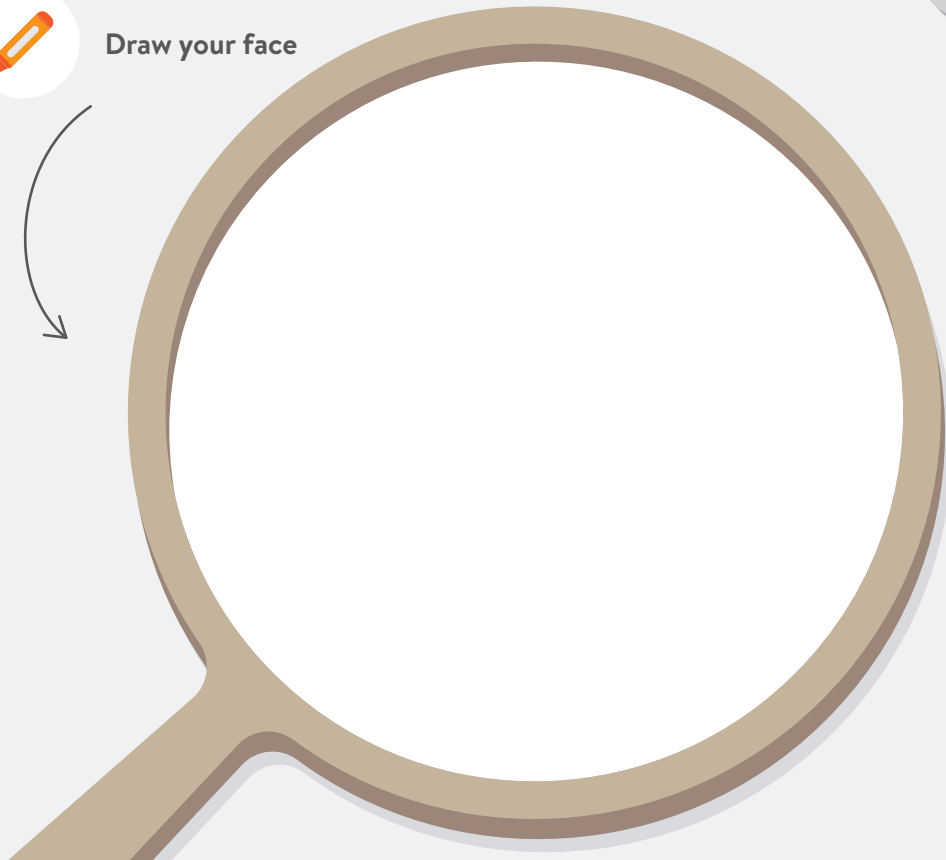


Draw a line from the words to part of face

- EYES
- NOSE
- MOUTH
- EARS



Draw your face



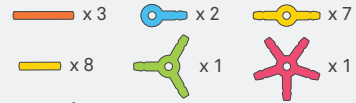
Draw your face with these emotions



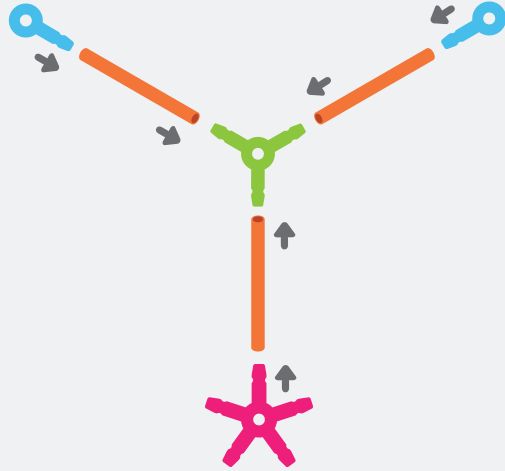
What does your hair look like?



# MAKE A FACE MASK



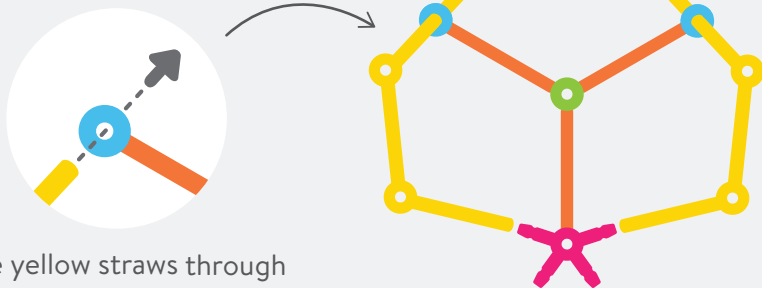
**1** Count 1 green connector, 1 red connector, 2 blue connectors and 3 orange straws



**2** Count 2 yellow connectors and 3 yellow straws



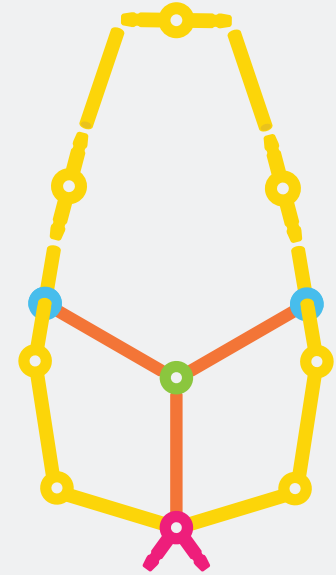
**3** Connect all pieces



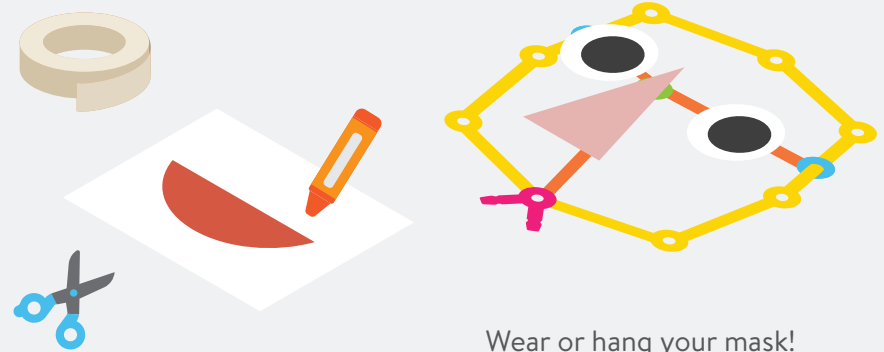
Slide yellow straws through blue connectors

**4** Count 3 yellow connectors and 2 yellow straws

Connect to yellow straws to finish face



**5** Draw on a piece of paper and cut eyes, a mouth, and nose then tape to mask



Wear or hang your mask!

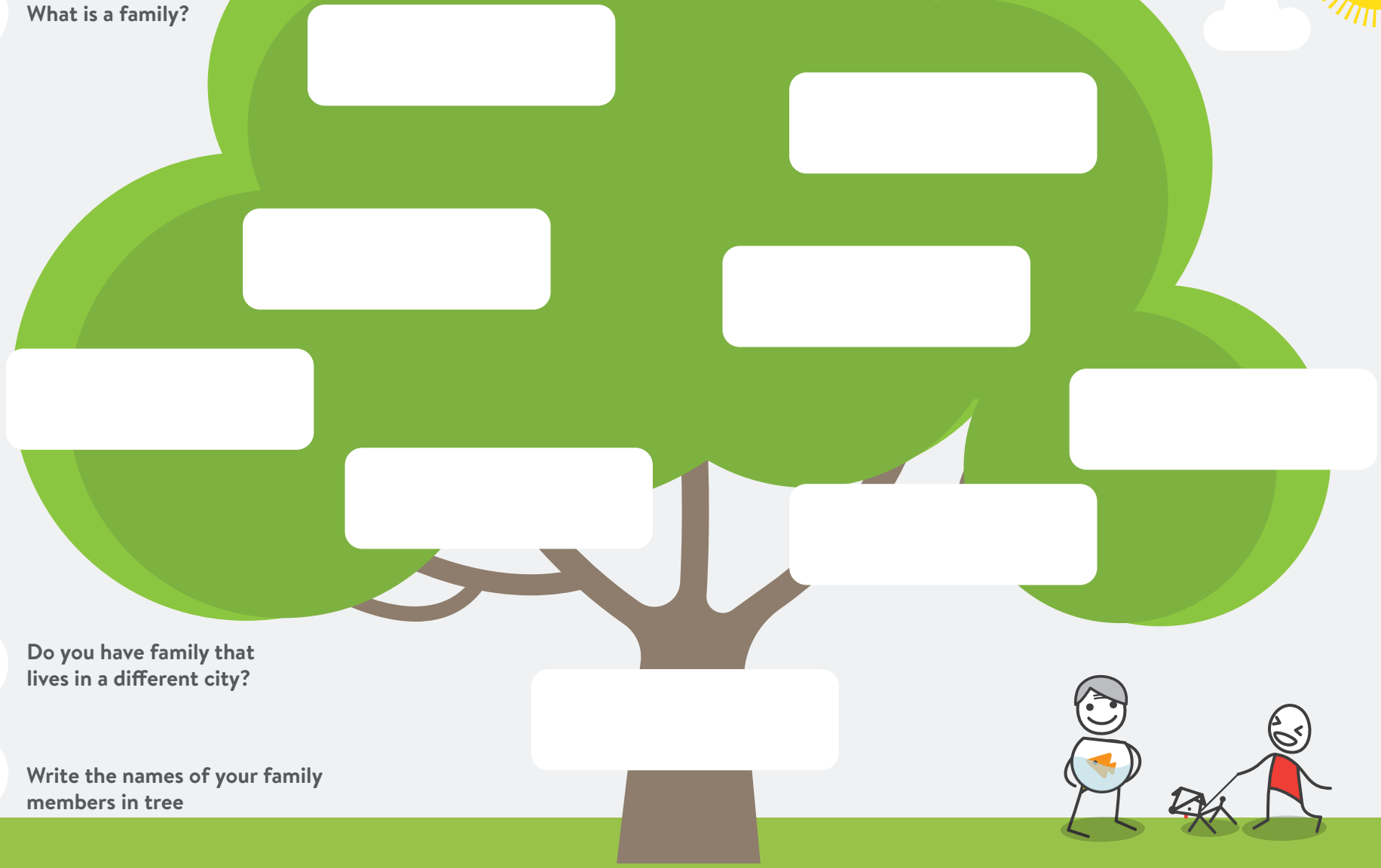
# 2. Family Tree



Are all families the same?



What is a family?



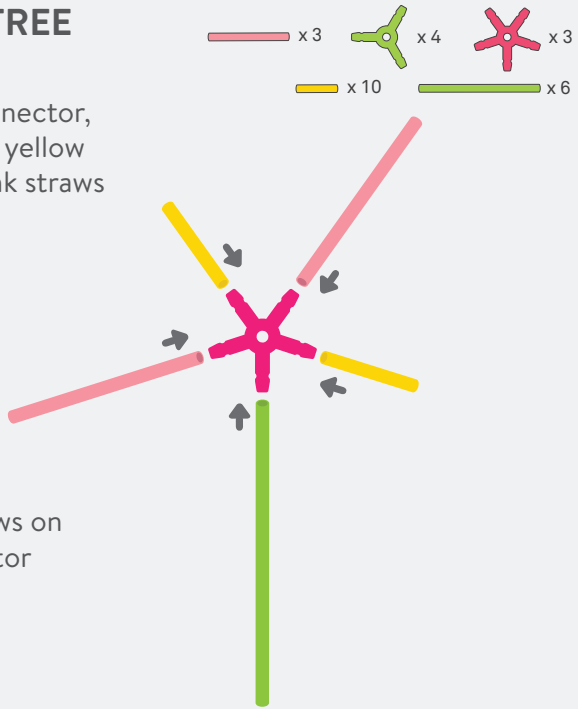
Do you have family that lives in a different city?



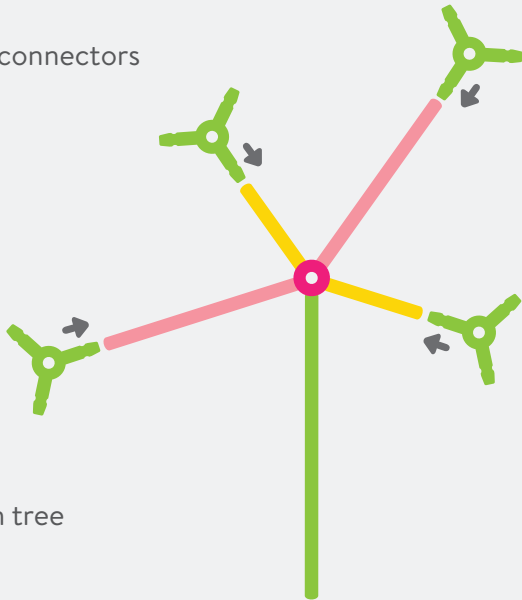
Write the names of your family members in tree

## MAKE A FAMILY TREE

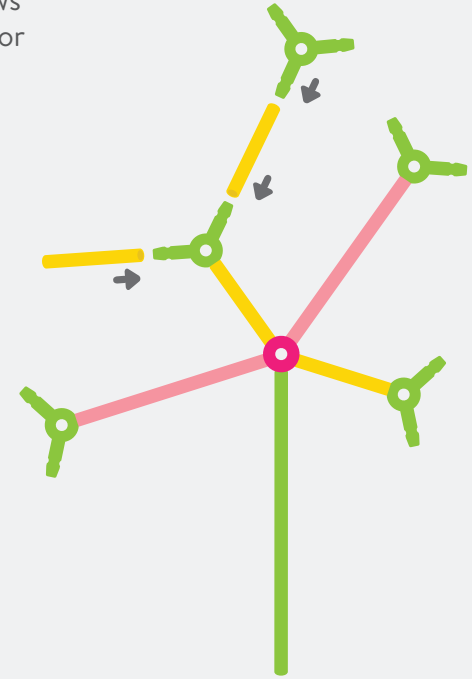
- 1** Count 1 red connector, 1 green straw, 2 yellow straws and 2 pink straws



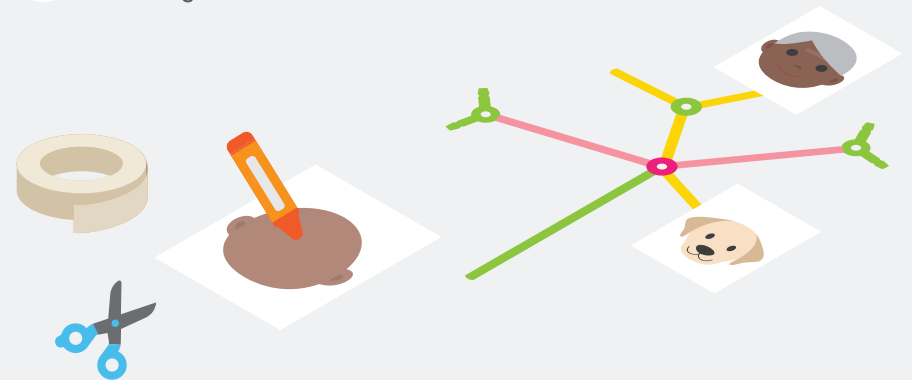
- 2** Count 5 green connectors



- 3** Count 2 yellow straws and 1 green connector



- 4** Draw each family member on paper rectangles in back of book.



# 3. My Home in the Neighborhood



Which kind of house do you live in?



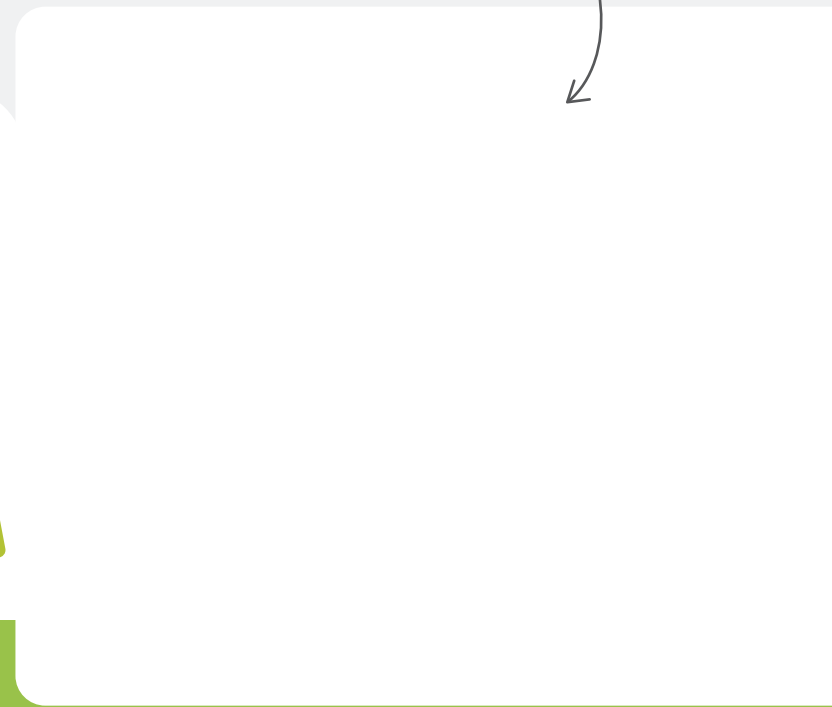
Name a house near your home



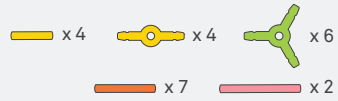
How many neighbors do you have?



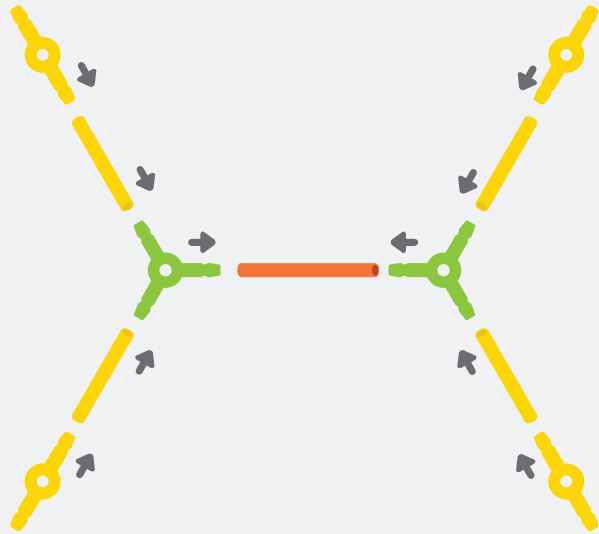
Draw your home



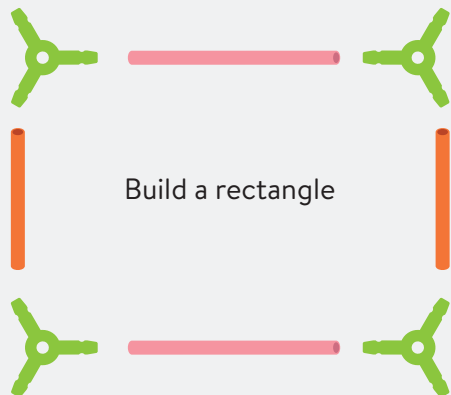
## BUILD A HOUSE WITH ROOF



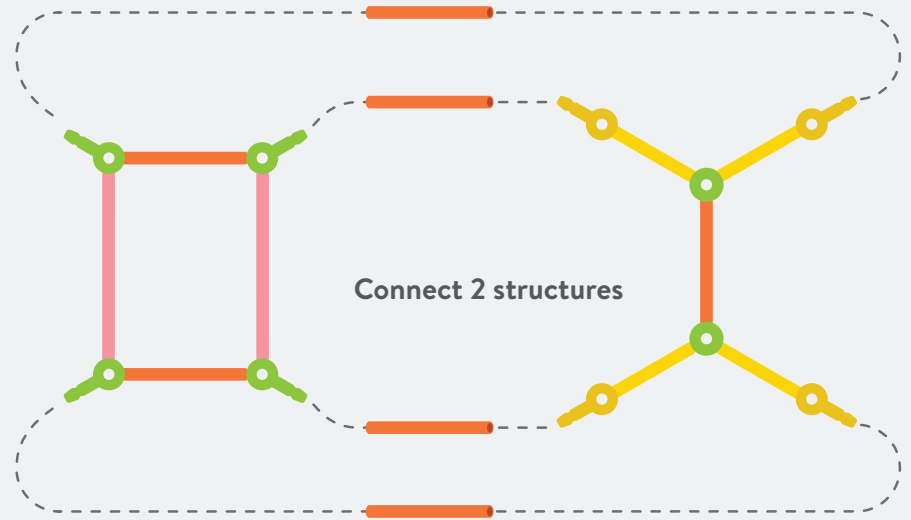
**1** Count 2 green connectors, 4 yellow connectors, 1 orange straw and 4 yellow straws



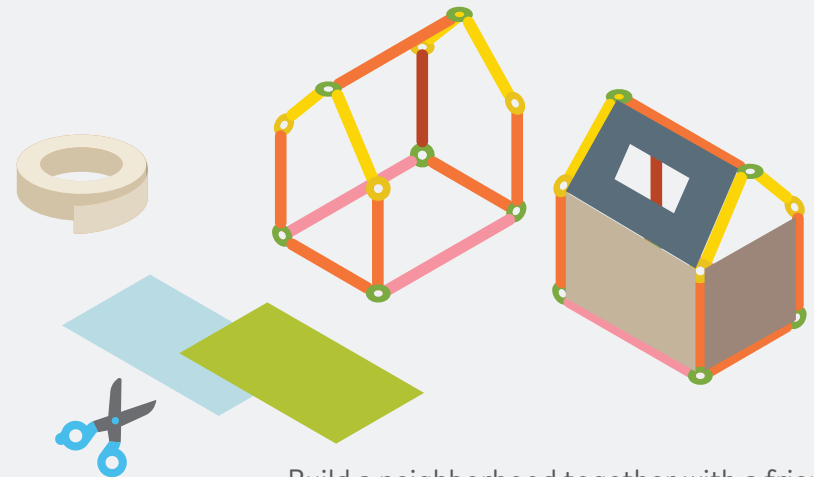
**2** Count 4 green connectors, 2 orange straws and 2 pink straws



**3** Count 4 yellow connectors and 4 orange straws



**4** Add paper or other materials for walls or make a landscape.



# 4. My Body



Look at each finger



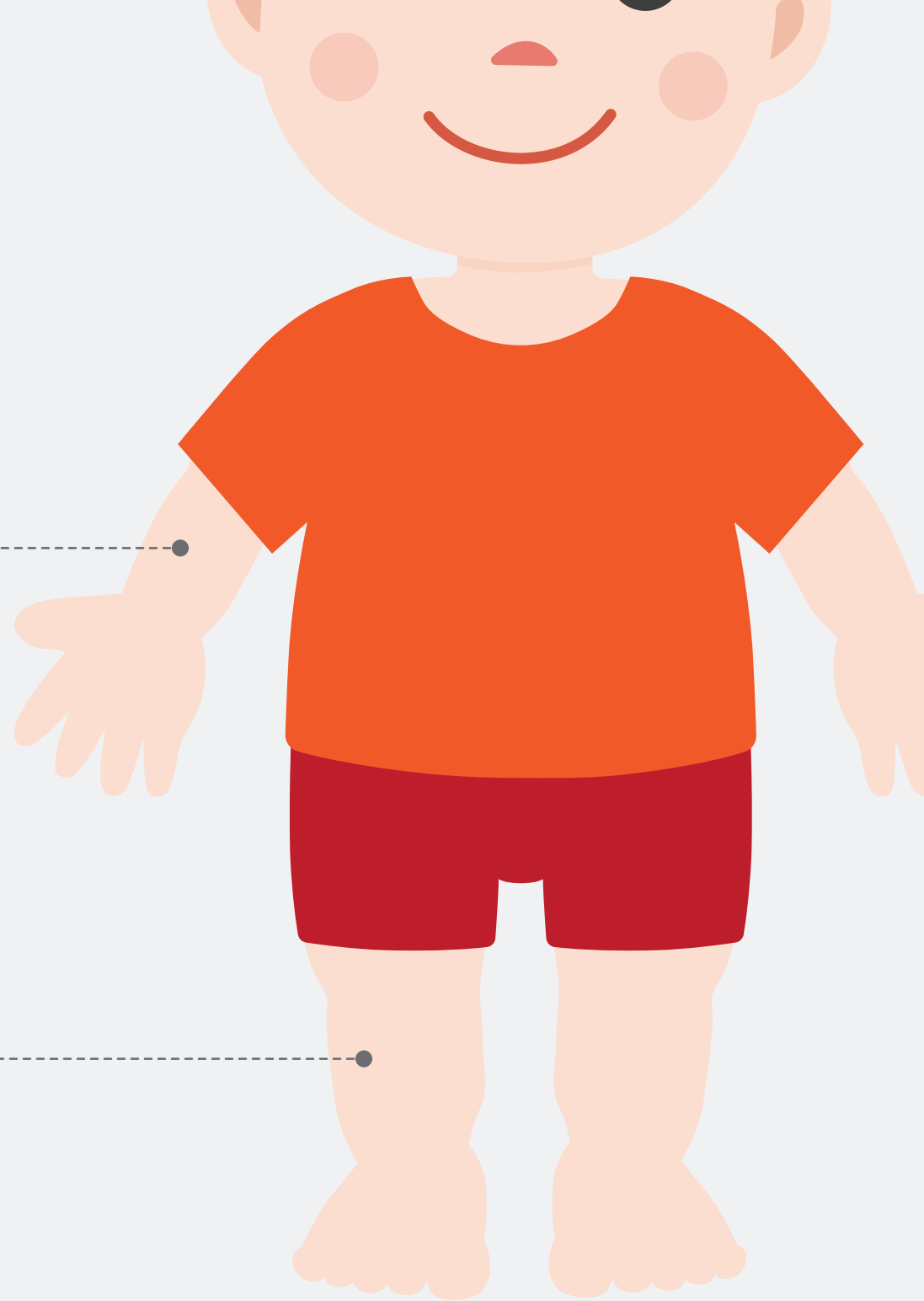
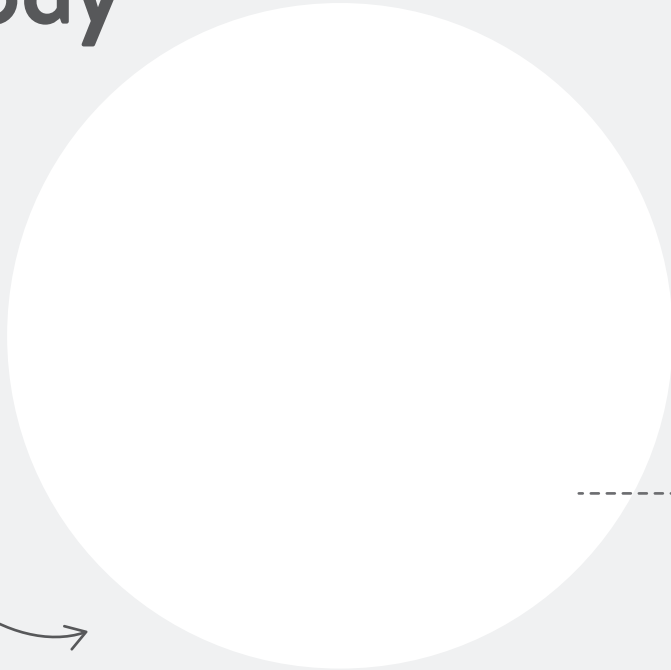
Draw an arm with a hand, elbow and fingers



Are your toes all the same size?

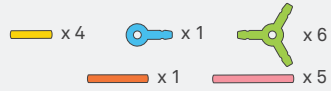


Draw a leg with a foot, knee and toes

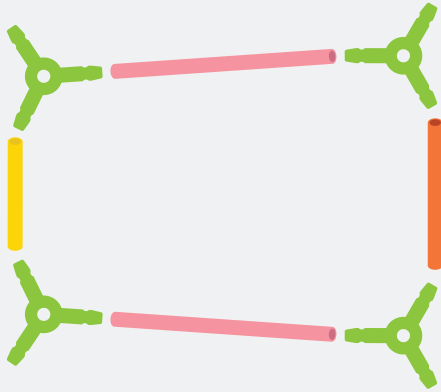




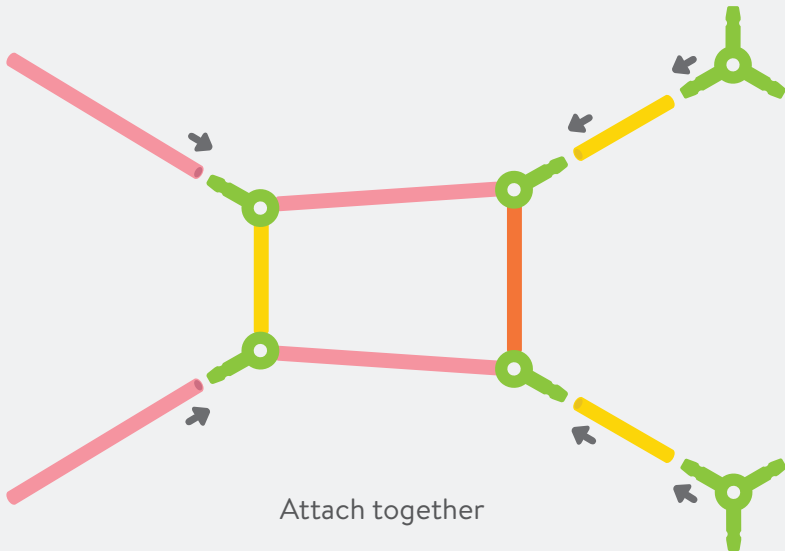
# BUILD A FOOT



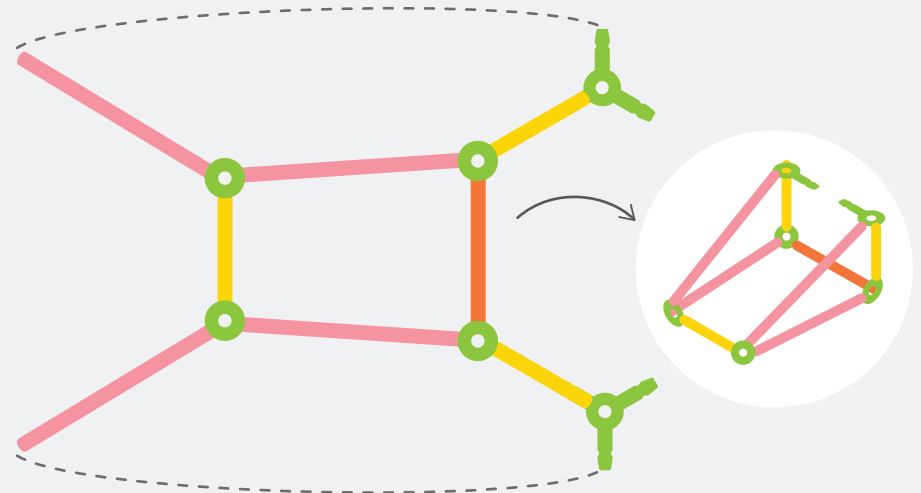
**1** Count 4 green connectors, 1 orange straw, 2 pink straws and 1 yellow straw



**2** Count 2 yellow straws, 2 green connectors and 2 pink straws



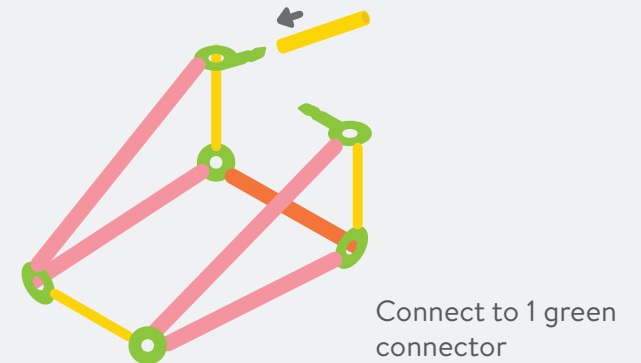
**3** Connect green connectors to pink straws



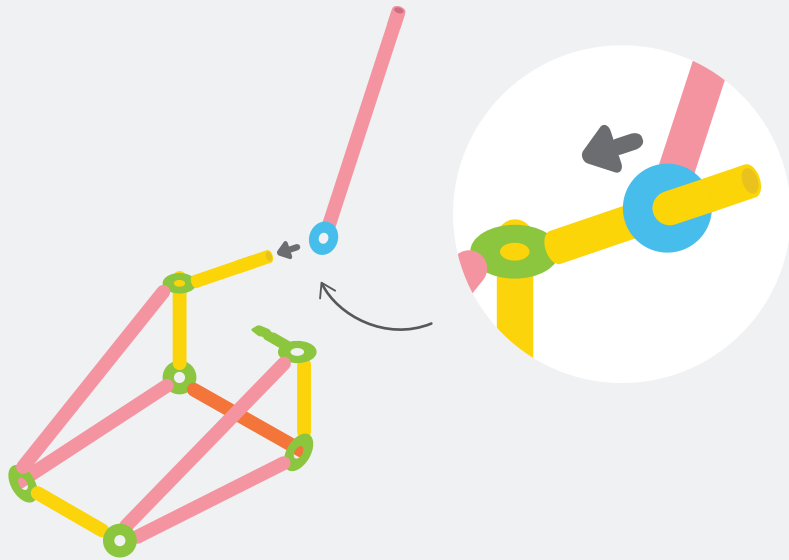
**4** Attach 1 blue connector to 1 pink straw



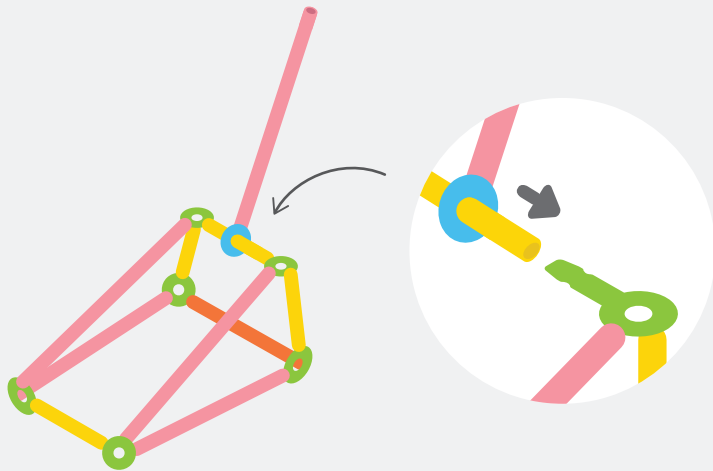
**5** Count 1 yellow straw



**6** Slide blue connector along yellow straw



**7** Connect yellow straw to green connector to close the foot!



Practice walking your moving foot model like your leg!




Take a look at your smile, family,  
home, and the surrounding culture  
that makes up who you are.

**Strawbees.**<sup>®</sup>