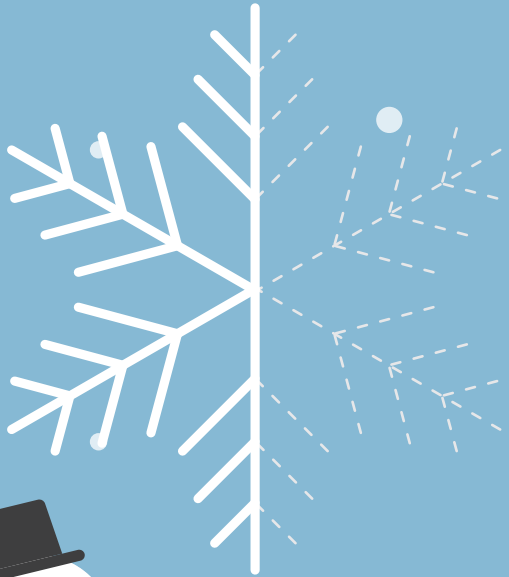


# SEASONS

# 1.Snowflakes



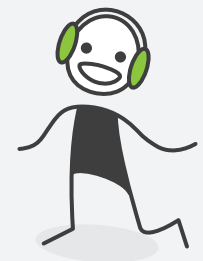
Draw other half of the snowflake.



Are two snowflakes ever the same?



Draw your own snowflake

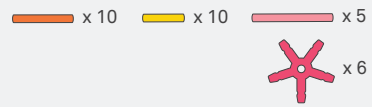


Name the season when you see snow.

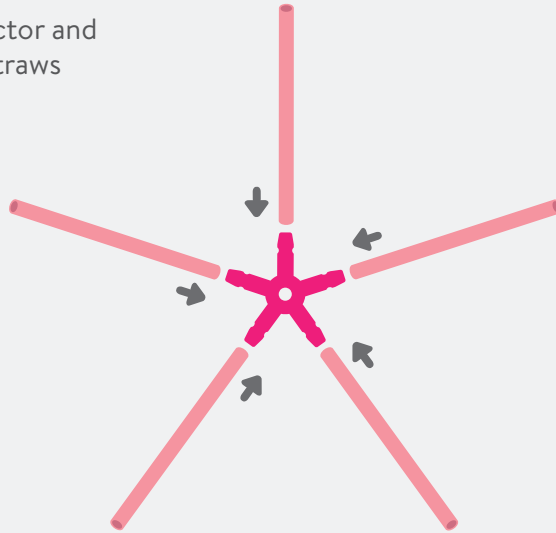


What is symmetry?

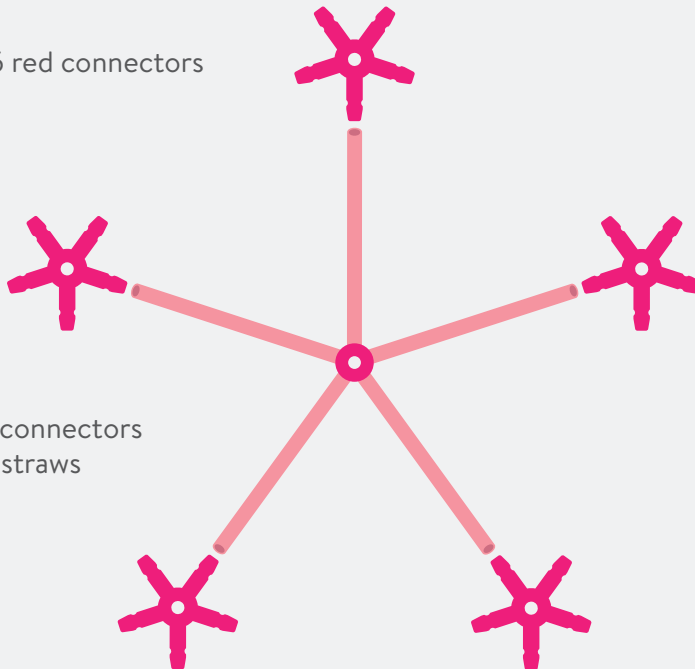
## BUILD SNOWFLAKES



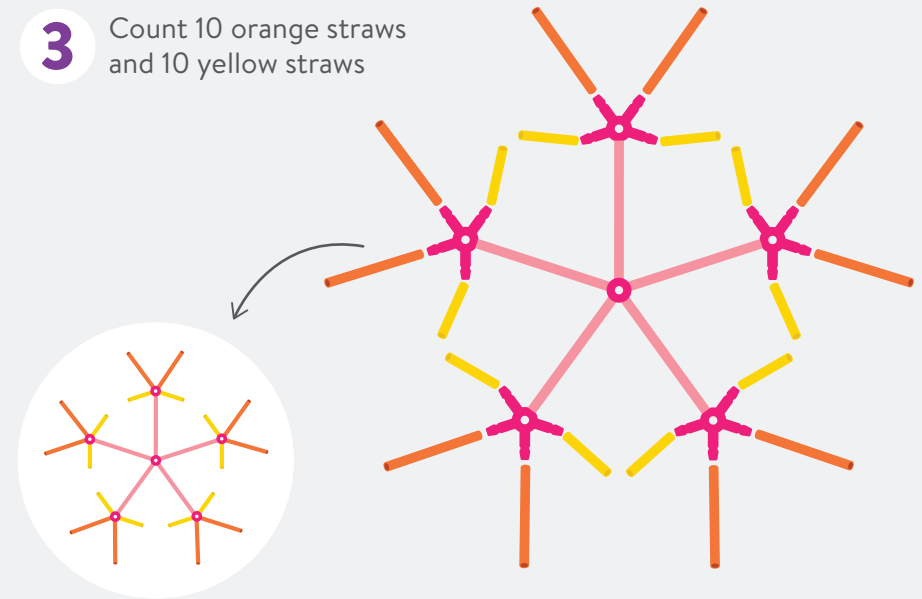
- 1** Count 1 red connector and attach the 5 pink straws



- 2** Count 5 red connectors

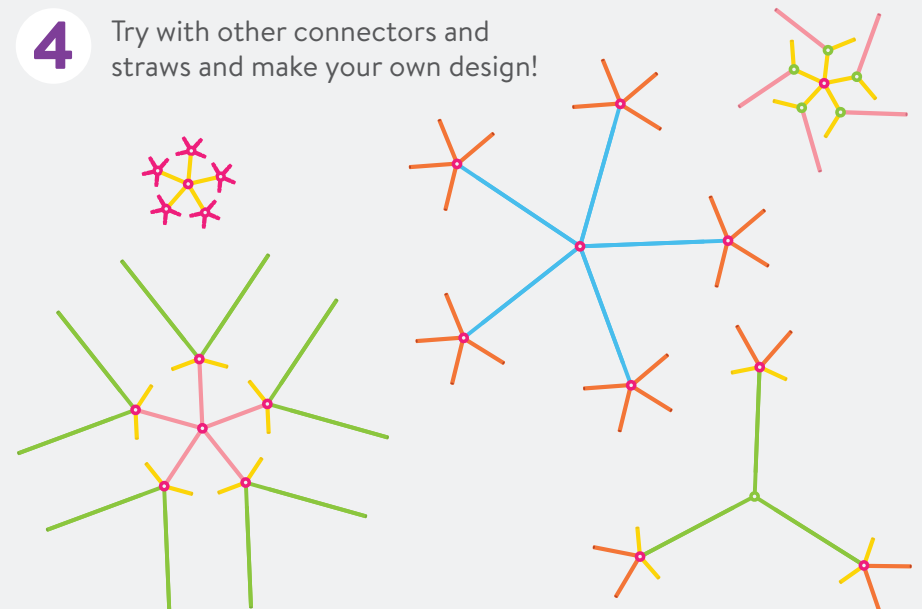


- 3** Count 10 orange straws and 10 yellow straws



Attach straws to red connectors

- 4** Try with other connectors and straws and make your own design!



# 2. Rain Umbrella



Sketch a raincoat and umbrella to keep the children dry.



Draw an arrow from cloud to ground.



Draw an arrow from water to cloud.



Name the seasons with a lot of rain.



What does rain do for the earth?



Draw an arrow from ground to water.

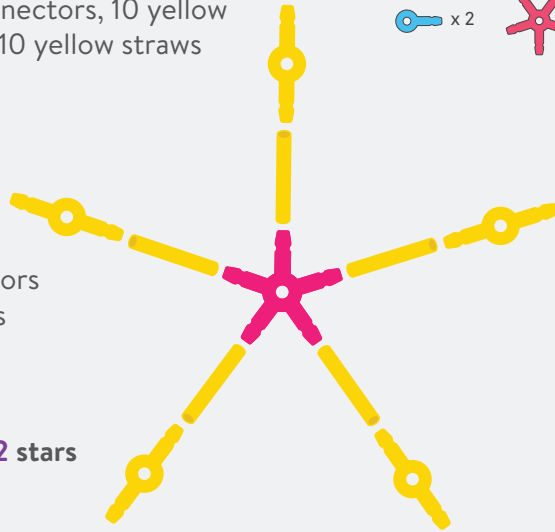
# BUILD AN UMBRELLA

- Green straw x1
- Orange straw x5
- Yellow straw x10
- Yellow connector x10
- Blue connector x2
- Pink star x2

**1** Count 2 red connectors, 10 yellow connectors and 10 yellow straws

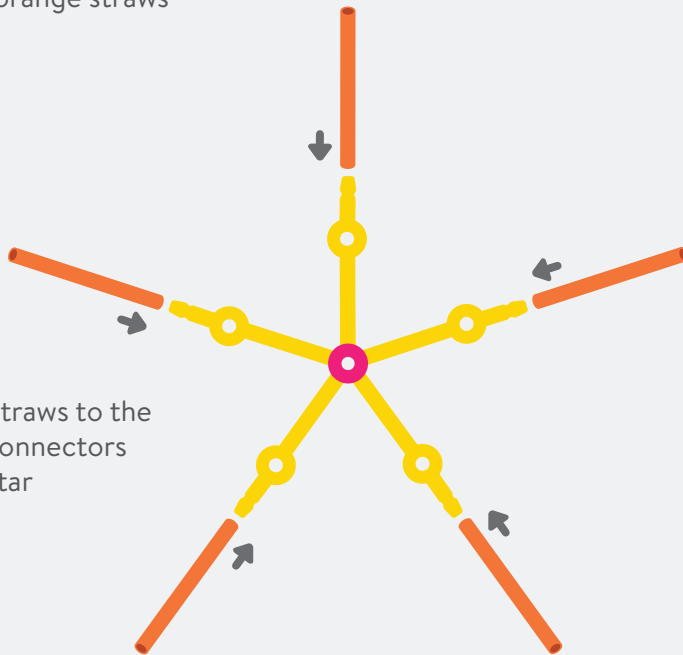
Attach the connectors to the yellow straws

Make 2 stars

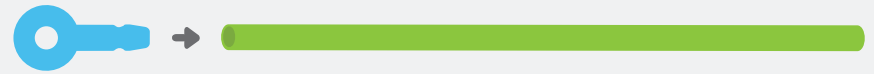


**2** Count 5 orange straws

Attach straws to the yellow connectors of one star

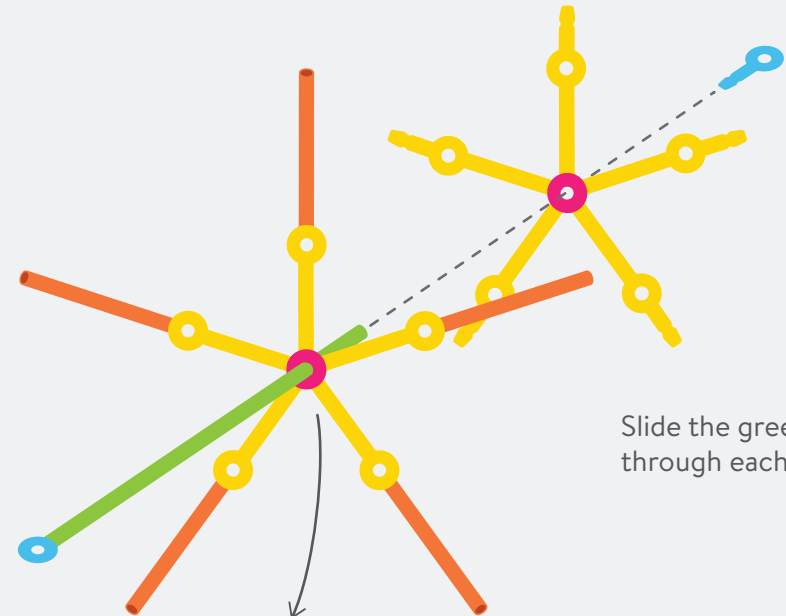


**3** Attach 1 blue connector and 1 green straw

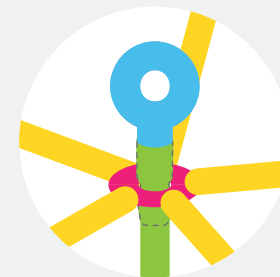


**4** Count 1 blue connector

Look it in the end with the blue connector

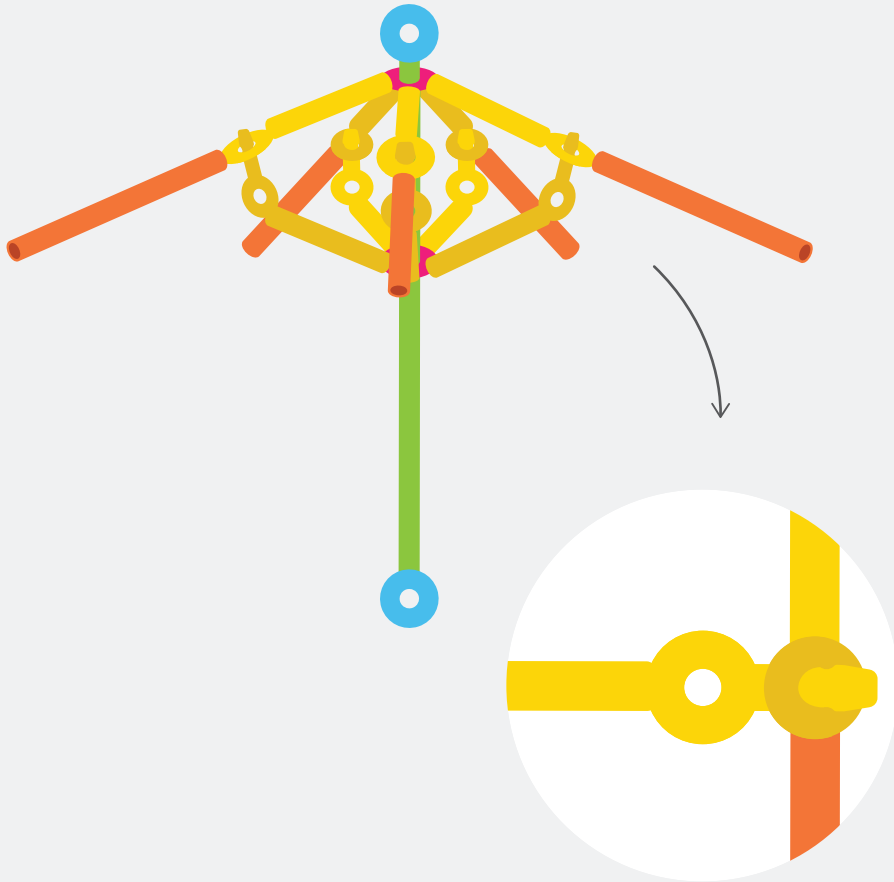


Slide the green straw through each star

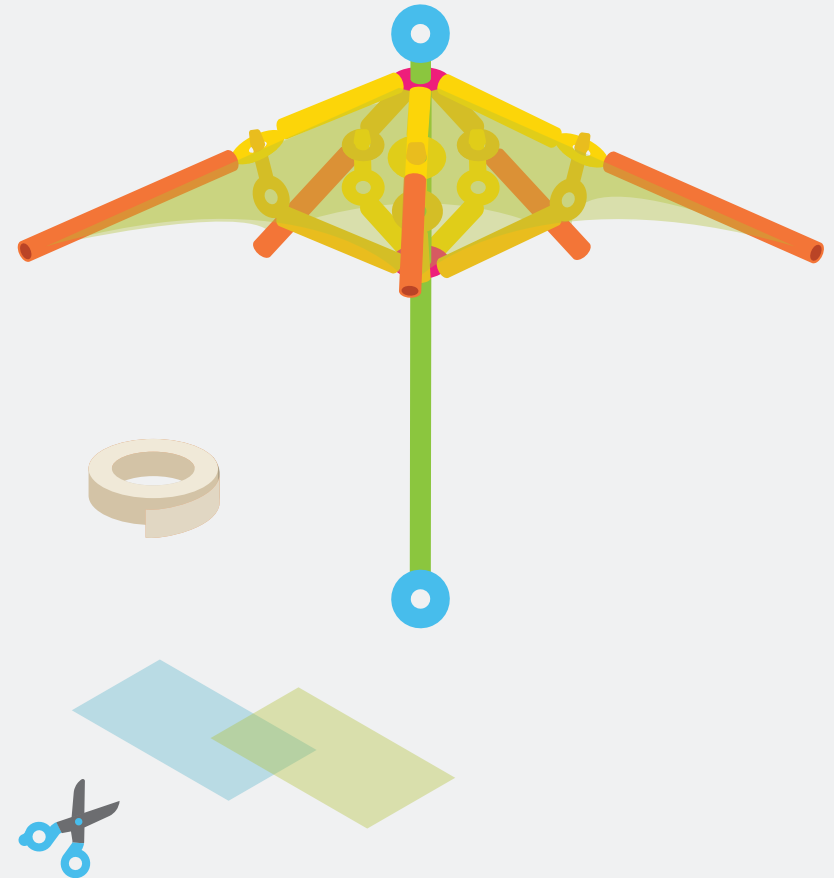


Slide and push the red connector along the straw until it clicks onto the blue connector

- 5** Connect the yellow connectors of the big and small star for umbrella



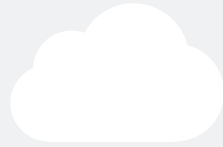
- 6** Can you make your umbrella rain proof?



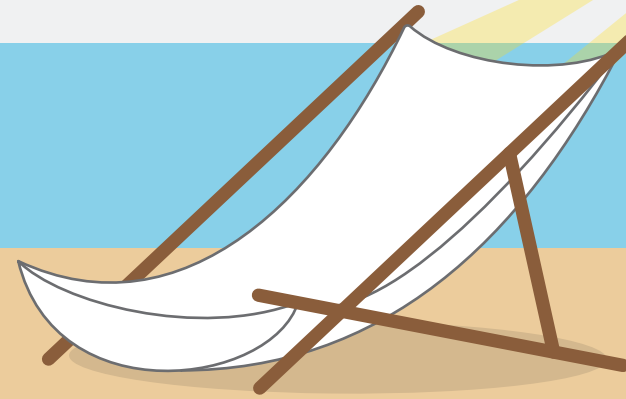
# 3. Sun Hat



Name the hottest season.



Color the chair a warm color.



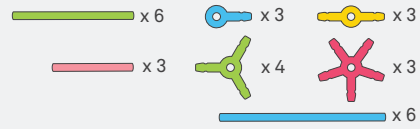
Why do you protect yourself from the hot sun?



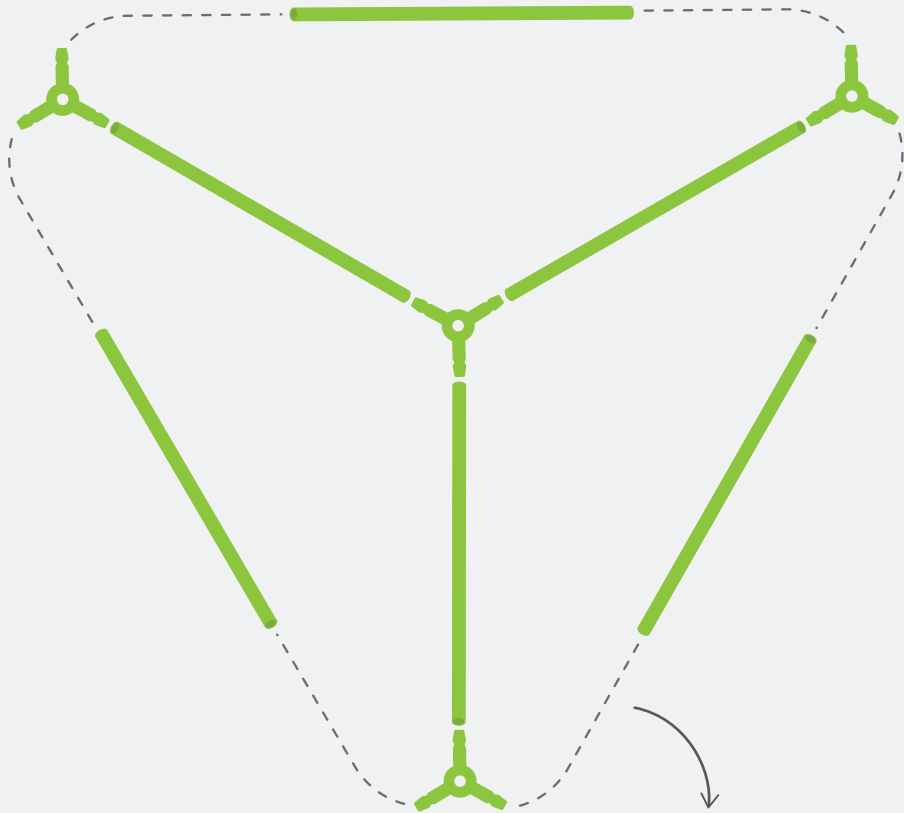
Draw a hat to protect from the sun's rays.



# BUILD A SUN HAT



**1** Count 4 green connectors and 6 green straws



Make a pyramid to fit your head

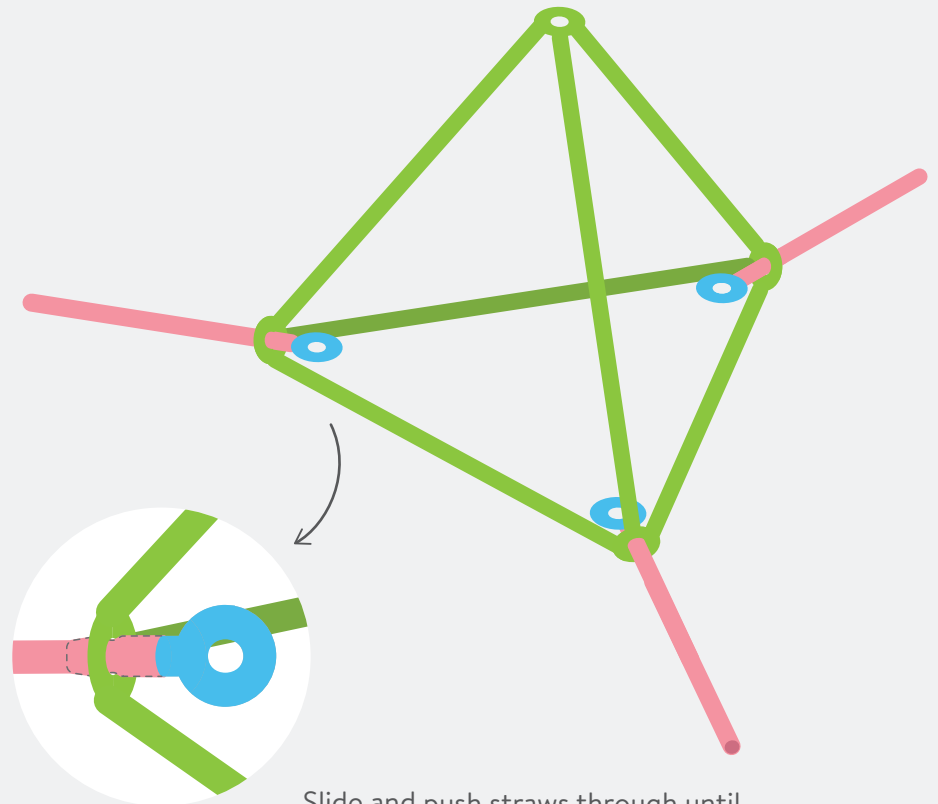


**2** Count 3 blue connectors and 3 pink straws



Make 3

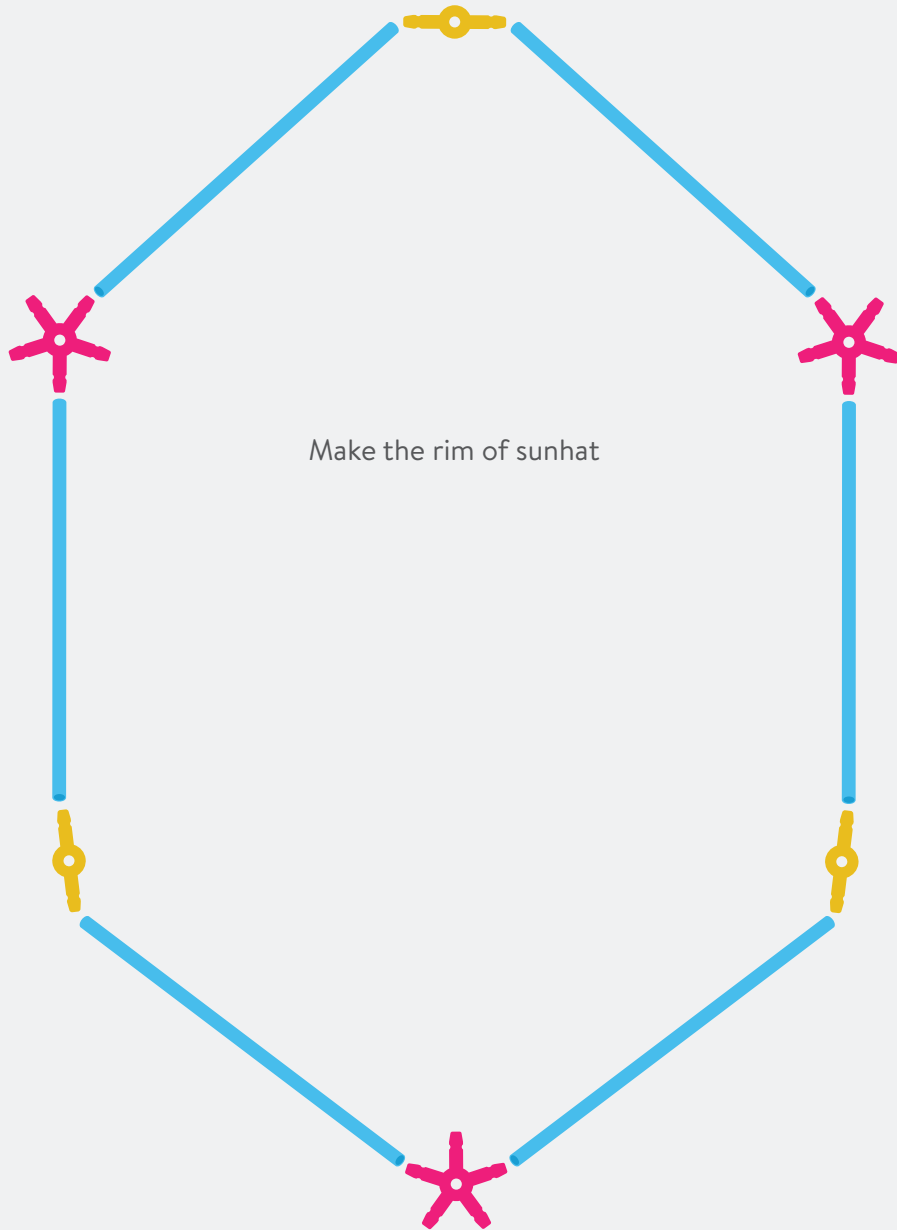
**3** Slide pink straws through connector holes on bottom of pyramid



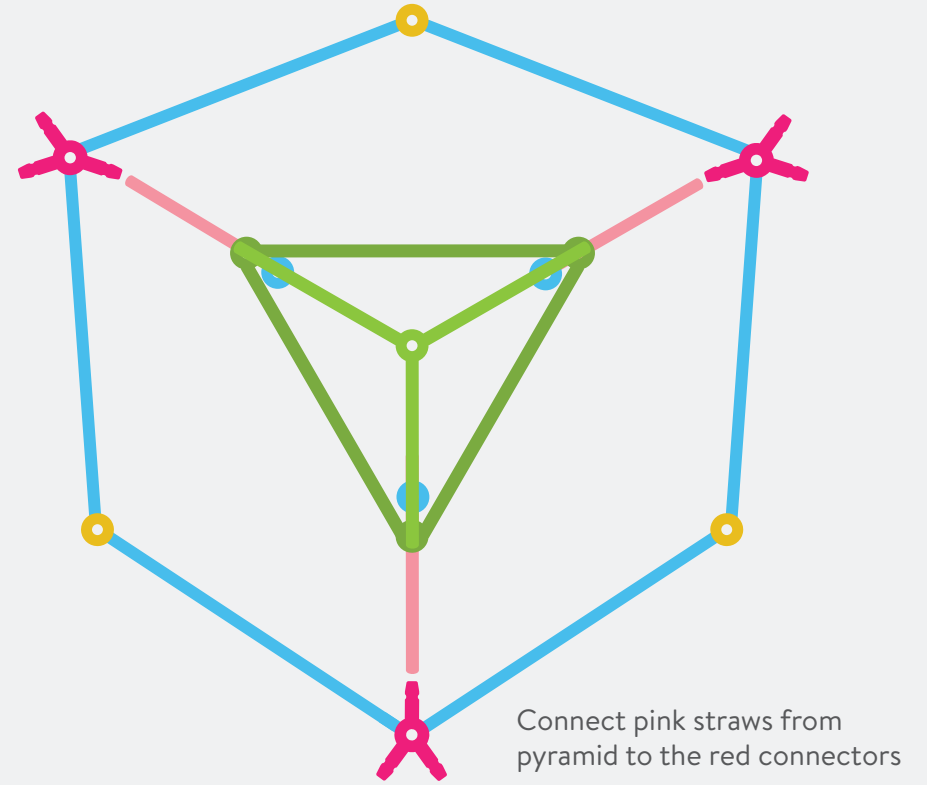
Slide and push straws through until clicked onto the blue connector



**4** Count 3 yellow connectors, 3 red connectors and 6 blue straws



**5** Place pyramid in middle of the blue circle



You can adjust for different head sizes by switching straw sizes on pyramid bottom!

# 4. Wind Chime



What season is the windiest?



Can you hear wind?



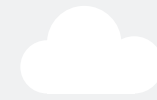
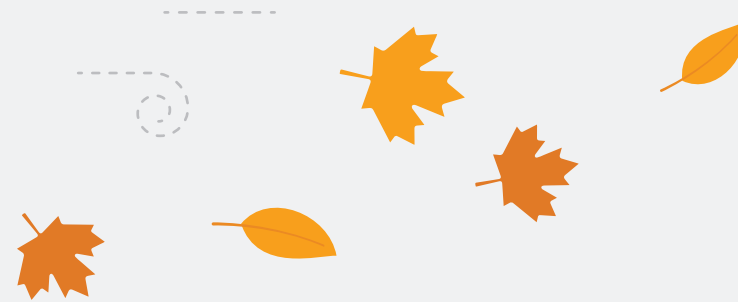
Make a sound!  
Build a beat with a friend.



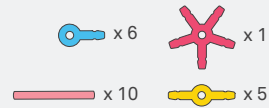
Draw a music note.



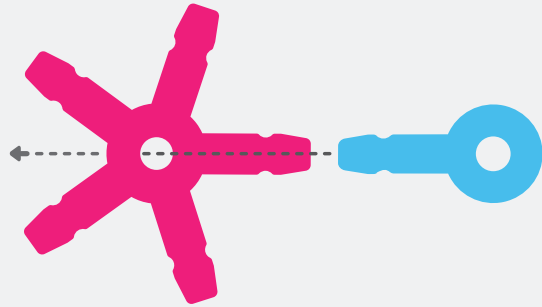
Draw hanging parts for the  
wind chime.



## BUILD A WIND CHIME

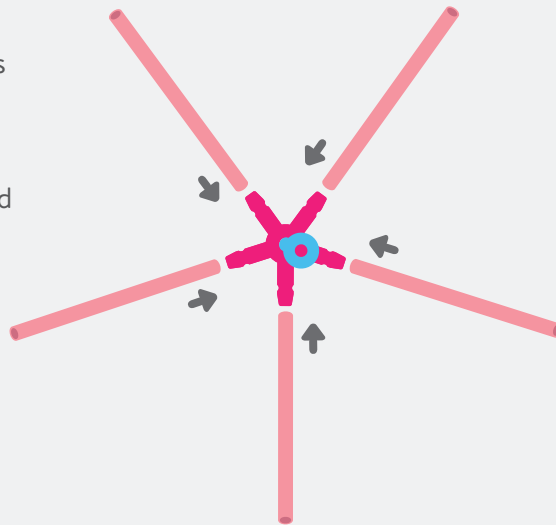


- 1** Attach 1 blue connector through 1 red connector to hang



- 2** Count 5 pink straws

Attach straws to red connector

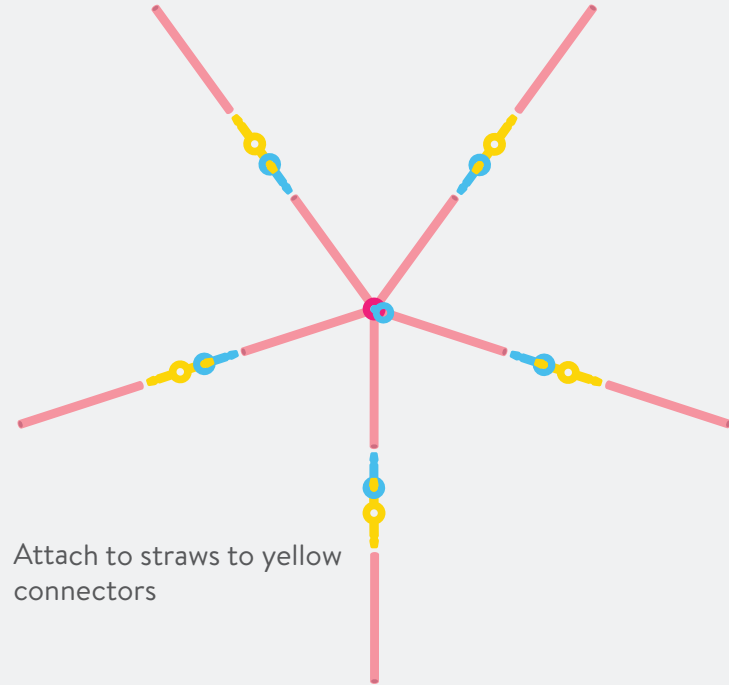


- 3** Count 5 blue connectors and 5 yellow connectors

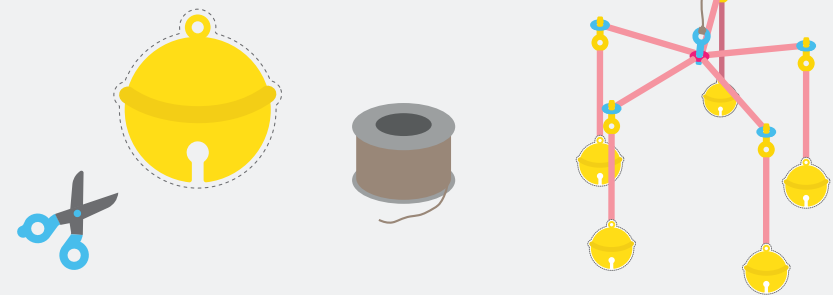


Make 5 loose joints

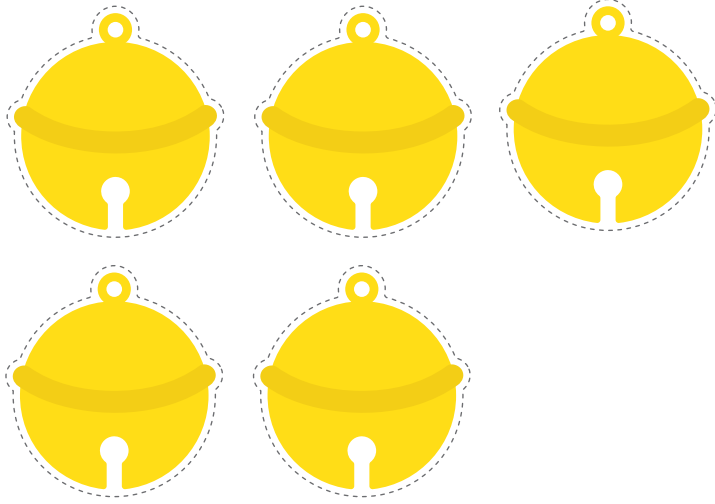
- 4** Count 5 pink straws



- 5** Cut out the bells in the back of the book and decorate your wind chime



Get a string, hang your wind chime in a tree and watch how the wind makes it dance





Focus on changing aspects of the seasons learning about what happens to the environment and how we adapt!